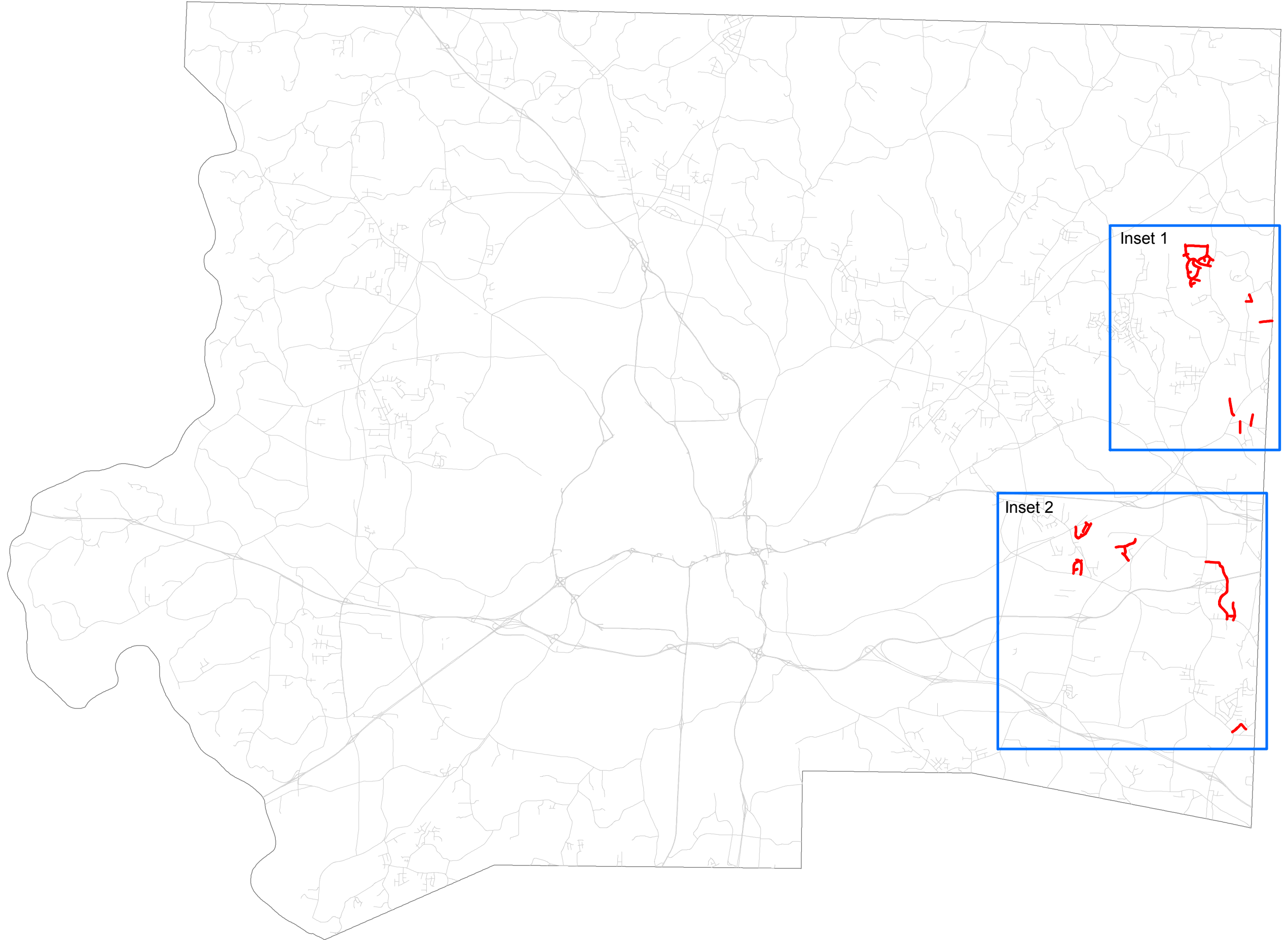


DI00187 - Forsyth Co AST Map List

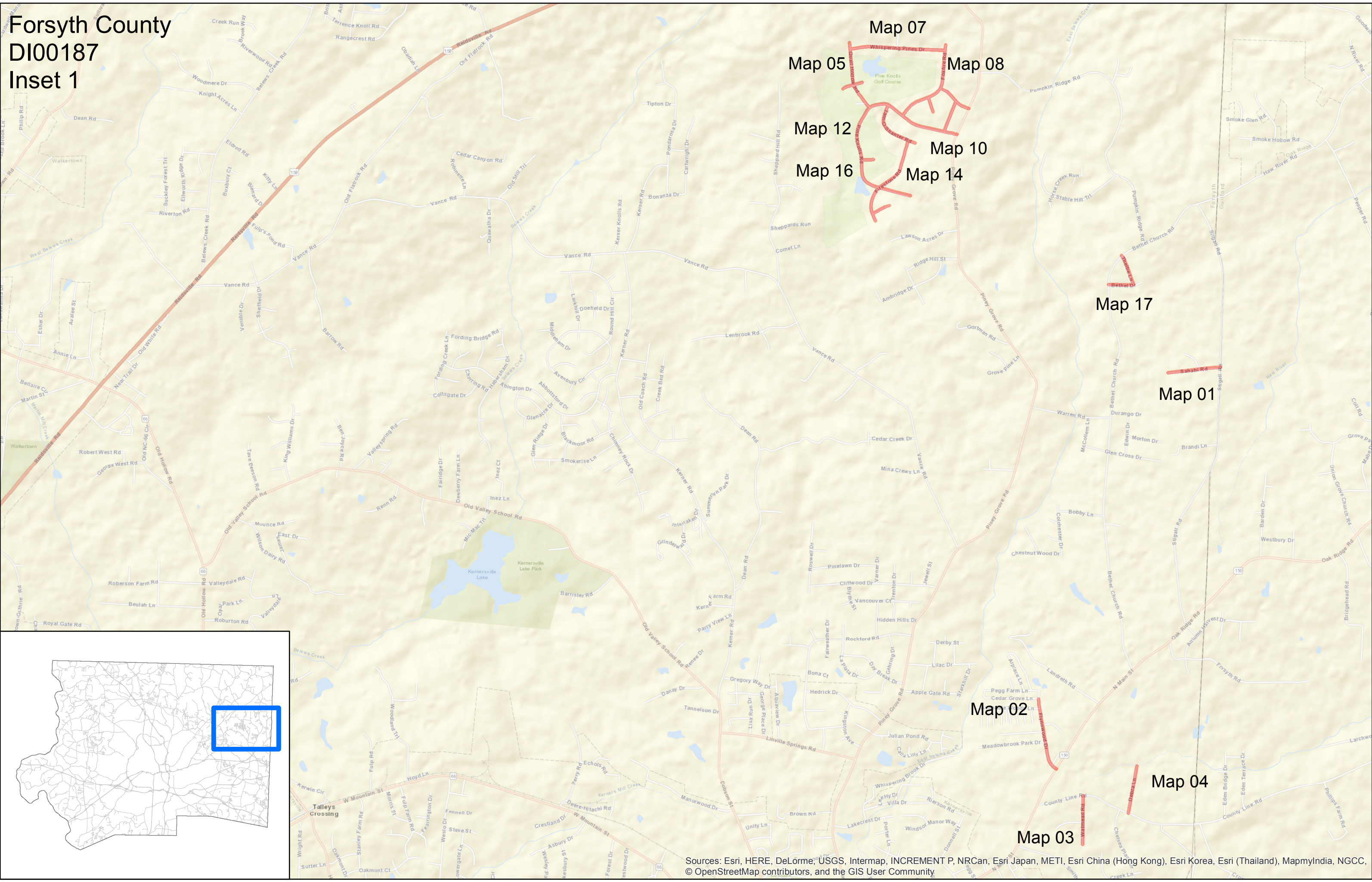
Contract Number	WBS	Map Number	County	Route Name	Begin MP	To MP	From Description	To Description	Length	Width	Treatment	Map SY
DI00187	2018CPT.09.13.20342	1	034-Forsyth	SR 2063 Sahabi Road	0.00	0.26	SR 2018 Stigall Road	EOM	0.26	20	Seal - Double and Fog Seal	3,086
DI00187	2018CPT.09.13.20342	2	034-Forsyth	SR 2082 Flywood Drive	0.00	0.37	NC 150	End Maint	0.37	20	Seal - Double and Fog Seal	4,318
DI00187	2018CPT.09.13.20342	3	034-Forsyth	SR 2124 Watmead Road	0.00	0.24	SR 2037 County Line Road	EOM	0.24	20	Seal - Double and Fog Seal	2,839
DI00187	2018CPT.09.13.20342	4	034-Forsyth	SR 2133 Deborah Lane	0.00	0.24	SR 2037 County Line Road	EOM	0.24	20	Seal - Double and Fog Seal	2,816
DI00187	2018CPT.09.13.20342	5	034-Forsyth	SR 2158 Quail Hollow Road	0.00	0.35	SR 2165 Pine Knolls Road	EOM	0.35	20	Seal - Double and Fog Seal	4,130
DI00187	2018CPT.09.13.20342	6	034-Forsyth	SR 2159 Augusta Court	0.00	0.10	EOM	EOM	0.10	20	Seal - Double and Fog Seal	1,220
DI00187	2018CPT.09.13.20342	7	034-Forsyth	SR 2160 Whispering Pines Drive	0.00	0.47	SR 2158 Quail Hollow Court	SR 2161 Foxfire Road	0.47	20	Seal - Double and Fog Seal	5,562
DI00187	2018CPT.09.13.20342	8	034-Forsyth	SR 2161 Foxfire Road	0.00	0.46	SR 2165 Pine Knolls Road	EOM	0.46	20	Seal - Double and Fog Seal	5,386
DI00187	2018CPT.09.13.20342	9	034-Forsyth	SR 2162 Saint Andrews Road	0.00	0.18	SR 2161 Foxfire Road	SR 1969 Piney Grove Road	0.18	20	Seal - Double and Fog Seal	2,089
DI00187	2018CPT.09.13.20342	10	034-Forsyth	SR 2163 Kingsbridge Road	0.00	0.16	SR 2162 Saint Andrews Road	SR 2165 Pine Knolls Road	0.16	20	Seal - Double and Fog Seal	1,889
DI00187	2018CPT.09.13.20342	11	034-Forsyth	SR 2164 Croaisdale Court	0.00	0.08	SR 2161 Foxfire Road	EOM	0.08	20	Seal - Double and Fog Seal	892
DI00187	2018CPT.09.13.20342	12	034-Forsyth	SR 2165 Pine Knolls Road	0.00	1.11	SR 1969 Piney Grove Road	EOM	1.11	20	Seal - Double and Fog Seal	13,001
DI00187	2018CPT.09.13.20342	13	034-Forsyth	SR 2166 Tam-O-Shanter Road	0.00	0.29	SR 2165 Pine Knolls Road	EOM	0.29	20	Seal - Double and Fog Seal	3,356
DI00187	2018CPT.09.13.20342	14	034-Forsyth	SR 2167 Firestone Road	0.00	0.48	SR 2166 Tam-O-Shanter Road	EOM	0.48	20	Seal - Double and Fog Seal	5,573
DI00187	2018CPT.09.13.20342	15	034-Forsyth	SR 2168 Laquita Court	0.00	0.10	SR 2167 Firestone Road	EOM	0.10	20	Seal - Double and Fog Seal	1,115
DI00187	2018CPT.09.13.20342	16	034-Forsyth	SR 2169 Bayhill Court	0.00	0.06	SR 2165 Pine Knolls Road	EOM	0.06	20	Seal - Double and Fog Seal	704
DI00187	2018CPT.09.13.20342	17	034-Forsyth	SR 2195 Thelbe Lane	0.00	0.16	SR 2017 Bethel Church Road	SR 2196 Bethel Drive	0.16	20	Seal - Double and Fog Seal	1,842
DI00187	2018CPT.09.13.20342	18	034-Forsyth	SR 2196 Bethel Drive	0.00	0.13	SR 2195 Thelbe Lane	SR 2017 Bethel Church Road	0.13	20	Seal - Double and Fog Seal	1,467
DI00187	2018CPT.09.13.20342	19	034-Forsyth	SR 2604 Brookford Road	0.00	1.66	SR 2611 Sandy Hill Road	NC 66	1.66	20	Seal - Double and Fog Seal	19,524
DI00187	2018CPT.09.13.20342	20	034-Forsyth	SR 2605 Slate Road	0.00	0.39	SR 2611 Sandy Hill Road	EOM	0.39	18	Seal - Double and Fog Seal	4,118
DI00187	2018CPT.09.13.20342	21	034-Forsyth	SR 2765 McNeil Road	0.00	0.25	NC 66	SR 2841 McNeil Road	0.25	20	Seal - Double and Fog Seal	2,969
DI00187	2018CPT.09.13.20342	22	034-Forsyth	SR 2792 Woodbrook Drive	0.00	0.49	EOM	EOM	0.49	18	Seal - Double and Fog Seal	5,122
DI00187	2018CPT.09.13.20342	23	034-Forsyth	SR 2793 Candlewood Drive	0.00	0.19	SR 2794 Windwood Drive	SR 2792 Woodbrook Drive	0.19	20	Seal - Double and Fog Seal	2,229
DI00187	2018CPT.09.13.20342	24	034-Forsyth	SR 2794 Windwood Drive	0.00	0.20	SR 2643 Union Cross Road	EOM	0.20	18	Seal - Double and Fog Seal	2,112
DI00187	2018CPT.09.13.20342	25	034-Forsyth	SR 2841 McNeill Road	0.00	0.15	SR 2765 McNeil Road	SR 2613 Squire Davis Road	0.15	20	Seal - Double and Fog Seal	1,748
DI00187	2018CPT.09.13.20342	26	034-Forsyth	SR 2843 Korner Roadk Road	0.00	0.27	SR 4315 Kernersville Road	SR 2845 Inland Drive	0.27	20	Seal - Double and Fog Seal	3,109
DI00187	2018CPT.09.13.20342	27	034-Forsyth	SR 2844 Drake Court	0.00	0.03	SR 2845 Inland Drive	EOM	0.03	18	Seal - Double and Fog Seal	317
DI00187	2018CPT.09.13.20342	28	034-Forsyth	SR 2845 Inland Drive	0.00	0.43	EOM	SR 2843 Korner Rock Road	0.43	20	Seal - Double and Fog Seal	5,034
DI00187	2018CPT.09.13.20342	29	034-Forsyth	SR 2847 Rolling Road	0.00	0.11	SR 4315 Kernersville Road	EOM	0.11	18	Seal - Double and Fog Seal	1,193
DI00187	2018CPT.09.13.20342	30	034-Forsyth	SR 2848 Rolling Court	0.00	0.19	SR 2847 Rolling Road	EOM	0.19	18	Seal - Double and Fog Seal	2,038
DI00187	2018CPT.09.13.20342	31	034-Forsyth	SR 2879 Melon Drive	0.00	0.16	SR 2604 Brookford Road	SR 2605 Slate Road	0.16	20	Seal - Double and Fog Seal	1,877
DI00187	2018CPT.09.13.20342	32	034-Forsyth	SR 4236 Country Meadow Lane	0.00	0.33	SR 2632 Sedge Garden Road	SR 4237 Spring Hill Circle	0.33	20	Seal - Double and Fog Seal	3,849
DI00187	2018CPT.09.13.20342	33	034-Forsyth	SR 4237 Spring Hill Circle	0.00	0.38	SR 2632 Sedge Garden Road	EOM	0.38	20	Seal - Double and Fog Seal	4,459
DI00187	2018CPT.09.13.20342	34	034-Forsyth	SR 4238 Spring Hill Court	0.00	0.04	SR 4237 Spring Hill Circle	EOM	0.04	18	Seal - Double and Fog Seal	422
DI00187	2018CPT.09.13.20342	35	034-Forsyth	SR 4239 Country Hill Court	0.00	0.08	SR 4236 Country Meadow Lane	EOM	0.08	18	Seal - Double and Fog Seal	876

Total Map Area (SY) 122,281
 Total Map Length (mi.) 10.58

Forsyth County
DI00187

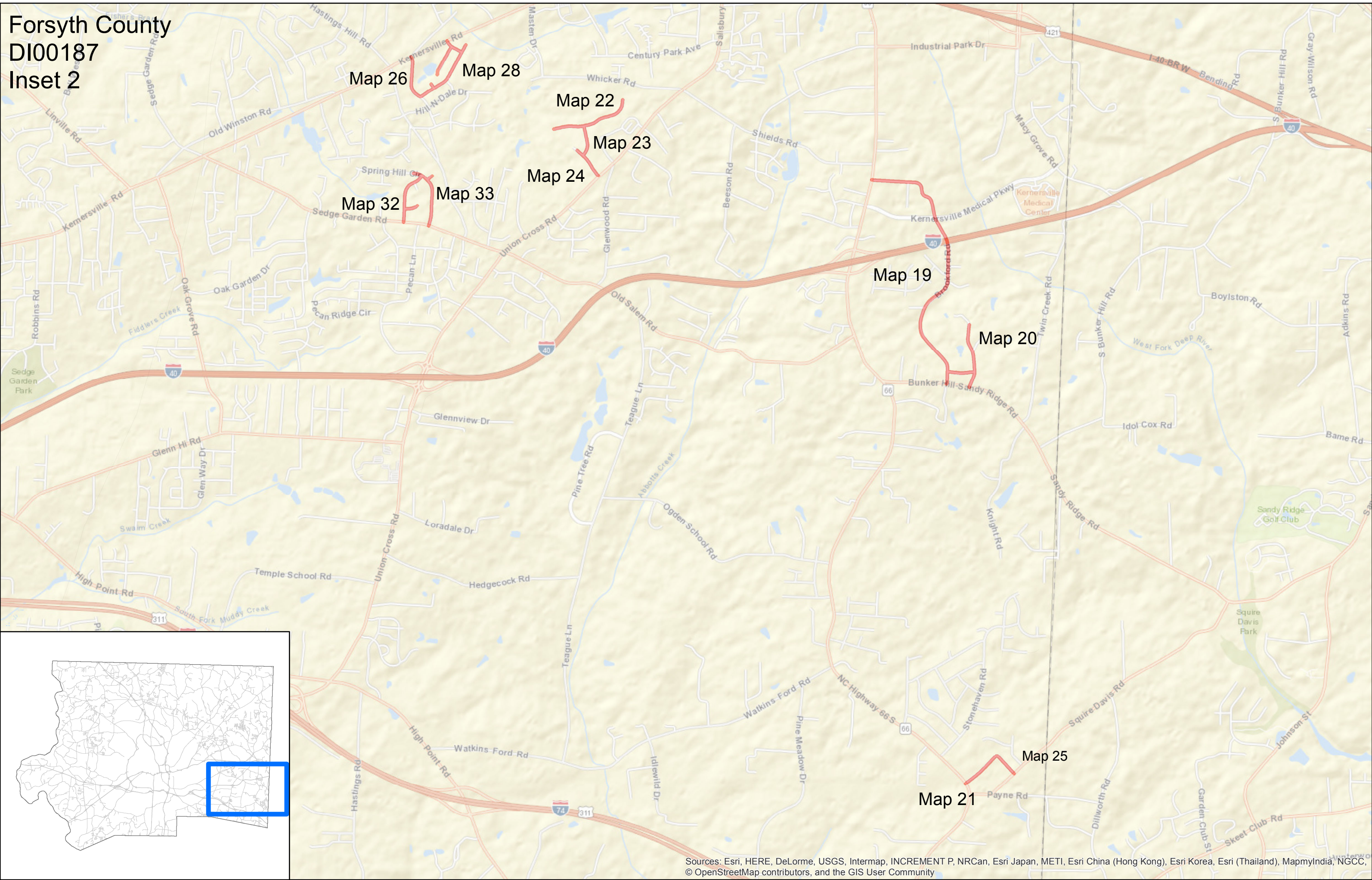


Forsyth County DI00187 Inset 1



Sources: Esri, HERE, DeLorme, USGS, Intermap, INCREMENT P, NRCan, Esri Japan, METI, Esri China (Hong Kong), Esri Korea, Esri (Thailand), MapmyIndia, NGCC, © OpenStreetMap contributors, and the GIS User Community

Forsyth County
DI00187
Inset 2



Map 26

Map 28

Map 22

Map 23

Map 24

Map 32

Map 33

Map 19

Map 20

Map 25

Map 21